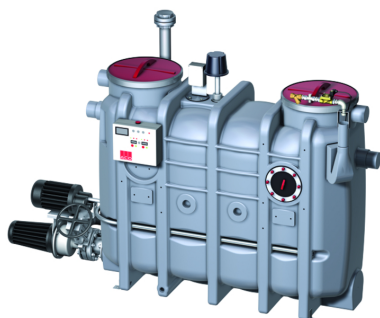


LipuJet-P-OAP Extension stage 3

Product information for the product group



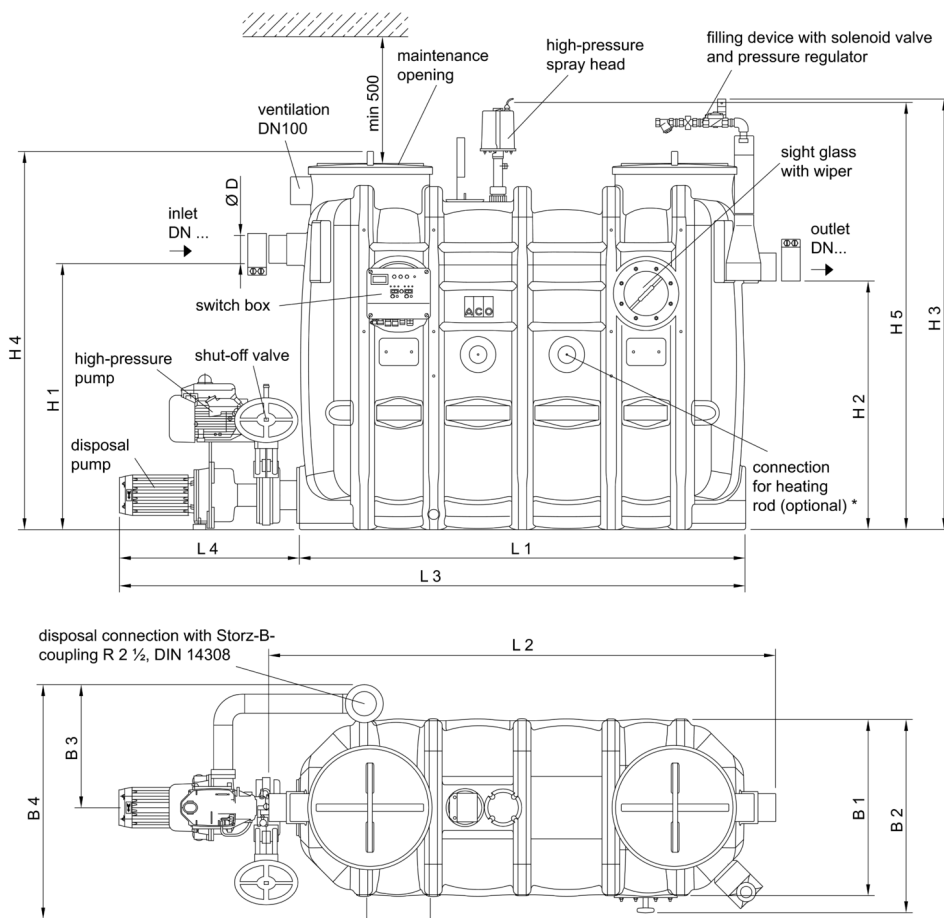
ACO Product benefits

- Proven stability: 25 years
 - Odour-free emptying, cleaning and filling
 - Pre- and post-cleaning times can be set individually
 - Hydromechanical high-pressure cleaning – only a cold-water connection required
 - Minimises disposal and maintenance costs thanks to economic step increases in nominal size
 - Small delivery dimensions
 - Low weight
- Grease separator plant as per DIN EN 1825 and DIN 4040-100
 - For indoors installation – frost free
 - With integrated sludge trap
 - Operating side: right/left
 - Draining connection, fire hose quick coupling B 2½"
 - Suction and emptying sump with drain plug socket 1"
 - Inspection window with wiper
 - Automatic high-pressure internal cleaning with pump
 - Nominal pressure: 175 bar
 - Capacity: 13 l/min
 - Chopping, mixing, rinsing in one process
 - Standard control with group fault reporting
 - Disposal pump with free flow impeller
 - Motor power: 3.0 kW/2850 rpm
 - Delivery performance: 20 m³/h at 1 bar medium delivery head
 - Stop valve upstream of disposal pump
 - Odour-proof maintenance opening, diameter: 450 mm
 - Filling device with magnetic valve (connection ¾") for automatic refilling
 - Electrical connector: 400 V/50 Hz/6.9 kW
 - System ACO Passavant
 - Building Supervisory Authority approval Z-54.1-414

Item Technical Data 3558.84.42

Nominal capacity	Nominal width	Contents			Weight		Operation side
		Sludge trap [l]	Grease store [l]	Overall [l]	Empty [kg]	Full [kg]	
NS 8.5	DN 150	940	475	1900	325	2225	Right-hand

Dimensions



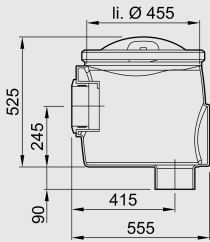
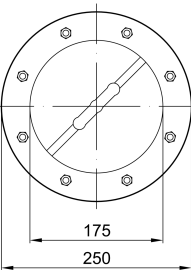
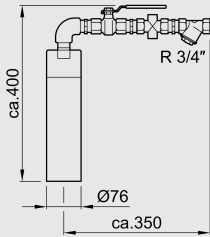
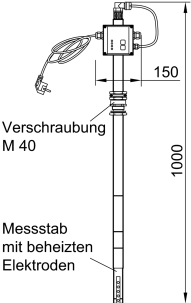
displayed:
 NS4, operating side right
 operating side left would show all
 components (disposal connection, filling
 device, sight glass, shut-off valve, switch
 box) positioned mirror-inverted to axis.

* not included in the scope of delivery

Nomi- nal ca- pacity	Dimensions													
	L1	L2	L3	L4	H1	H2	H3	H4	H5	W1	W2	B3	B4	D
	[mm]	[mm]	[mm]	[mm]	[mm]	[mm]	[mm]	[mm]	[mm]	[mm]	[mm]	[mm]	[mm]	[mm]
NS 8.5	2250	2485	2950	700	1250	1180	1880	1700	1900	950	1020	625	1180	160

Accessories

	Description	Used with	Description	Item number
	Sampling pot DN 150	<ul style="list-style-type: none"> Grease separator LipuJet-P/Li-puSmart-P <ul style="list-style-type: none"> □ NS 5.5 – 10 Starch separator FapuJet-P-OAP <ul style="list-style-type: none"> □ NS 2 	<ul style="list-style-type: none"> For installation of horizontal pipes DN 150 to grease separator Round shape with <ul style="list-style-type: none"> □ Coupling socket seal (material SBR) on inlet and spigot on outflow □ Odour-proof maintenance opening DN 450 Weight: 10.1 kg 	3300.09.21

	Description	Used with	Description	Item number
	Sampling pot DN 150	<ul style="list-style-type: none"> ■ Grease separator LipuJet-P/LipuSmart-P <ul style="list-style-type: none"> □ NS 5.5 – 10 ■ Starch separator FapuJet-P-OAP <ul style="list-style-type: none"> □ NS 2 	<ul style="list-style-type: none"> ■ For installation in vertical pipes DN 150 going to grease separator ■ Round shape with <ul style="list-style-type: none"> □ Coupling socket seal (material SBR) on inlet and spigot on outflow □ Odour-proof maintenance opening DN 450 ■ Weight: 10.1 kg 	3300.10.21
	Viewing window	<ul style="list-style-type: none"> ■ Grease separator <ul style="list-style-type: none"> □ LipuJet-P-OB/OD/R/RD □ LipuSmart-P-OB/OD ■ BioJet-P-OM/RM (NS 2-25) 	<ul style="list-style-type: none"> ■ Nominal width: DN 200 ■ With screen wiper ■ Weight: 3.2 kg 	3300.11.10
	Filling device	<ul style="list-style-type: none"> ■ Grease separator <ul style="list-style-type: none"> □ LipuJet-P-OB/OD/R/RD □ LipuSmart-P-OB/OD ■ BioJet-P-OM/RM (NS 2-25) 	<ul style="list-style-type: none"> ■ Free outlet as per DIN 1988 Part 4 ■ For connection to drinking water supply ■ With ball valve R ¾" ■ With pressure relief valve ■ Weight: 3.5 kg 	3300.11.22
	Grease layer thickness measuring device	<ul style="list-style-type: none"> ■ LipuJet-P <ul style="list-style-type: none"> □ Oval NS 1 – 10 □ Round NS 2 – 20 ■ LipuJet-S <ul style="list-style-type: none"> □ Oval NS 1 – 10 □ Round NS 2 – 20 ■ LipuSmart-P <ul style="list-style-type: none"> □ Oval NS 1 – 10 	<ul style="list-style-type: none"> ■ For electronic measurement of layer of grease ■ Suitable for liquid and/or congealing grease ■ Measuring device with plug and used connecting cable, length: 3 m ■ With two voltage-free changeover contacts to display full warning (80 %) and advance warning of fill level (50 %) ■ With visual display of fill level ■ With heated probe rod to increase reliability of operation ■ Operating voltage: 230VAC/5 VA ■ Max consumption approx. 12 W ■ Weight: 2.8 kg 	3300.11.50

You can find further accessories under → /35588442